

Natural changes of population* 1961 – 1997

Profile
July 2023

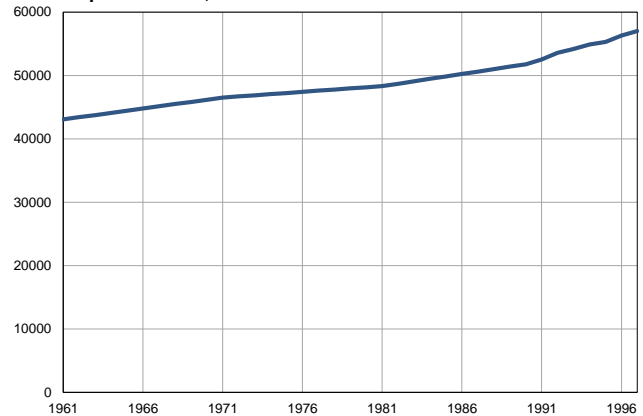
Kosovska Kamenica

	1961	1997
Population size	43058	57000
Livebirths, Number	1681	997
Deaths, Number	480	276
Natural increase, Number	1201	721
Infants deaths, Number	199	23
Livebirths, per 1,000 population	39	18
Deaths, per 1,000 population	11	5
Natural increase, per 1,000 population	28	13
Infants deaths, per 1,000 livebirths	118	23

Source: Vital Statistics, SORS

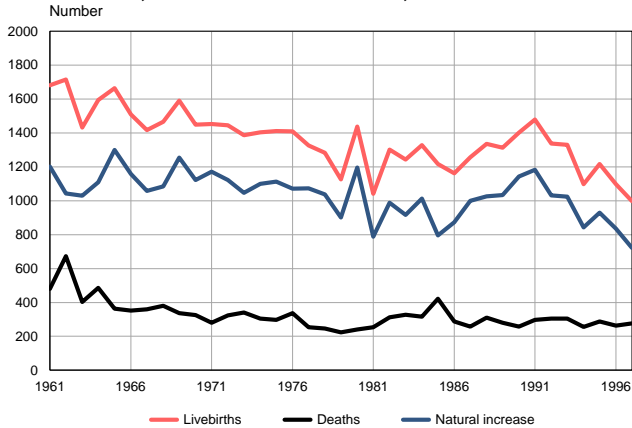
* Since 1998, demographic data for the AP Kosovo and Metohija have not been available for the SORS, and therefore these data are not included in the coverage for the Republic of Serbia.

Population size, 1961–1997



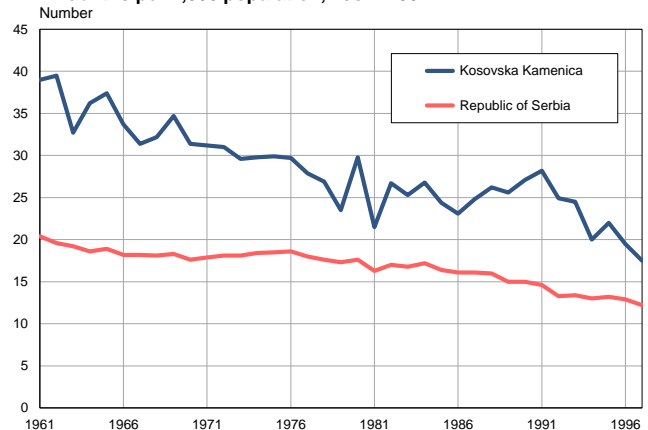
Source: Vital Statistics, SORS

Livebirths, deaths and natural increase, 1961–1997



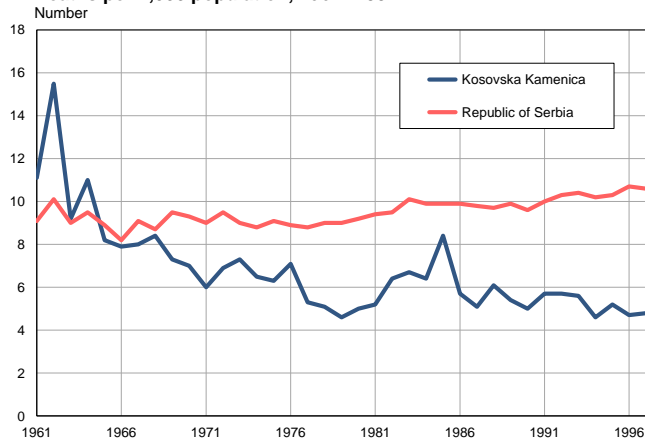
Source: Vital Statistics, SORS

Livebirths per 1,000 population, 1961–1997



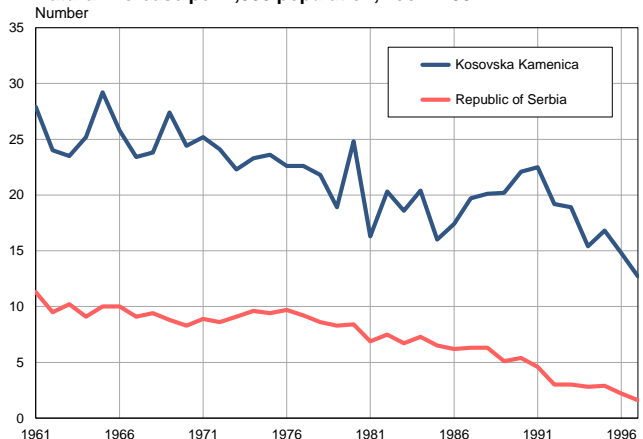
Source: Vital Statistics, SORS

Deaths per 1,000 population, 1961–1997



Source: Vital Statistics, SORS

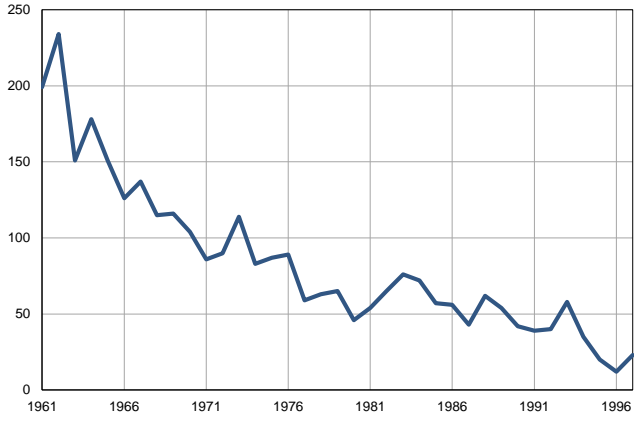
Natural increase per 1,000 population, 1961–1997



Source: Vital Statistics, SORS

Infants deaths, 1961–1997

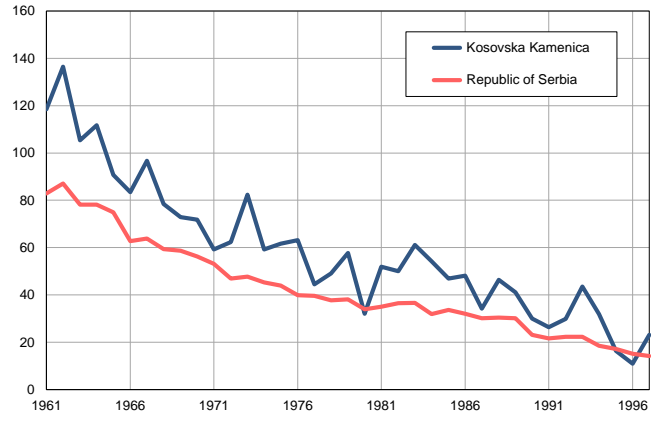
Number



Source: Vital Statistics, SORS

Infants deaths per 1,000 livebirths, 1961–1997

Number



Source: Vital Statistics, SORS

Table. Natural changes of population, Kosovska Kamenica

Year	Number of population	Livebirths	Deaths	Natural increase	Infants deaths	per 1000 population			Infant deaths per 1000 livebirths
						Livebirths	Deaths	Natural increase	
1961	43058	1681	480	1201	199	39.0	11.1	27.9	118.4
1962	43403	1715	673	1042	234	39.5	15.5	24.0	136.4
1963	43748	1432	403	1029	151	32.7	9.2	23.5	105.4
1964	44093	1594	485	1109	178	36.2	11.0	25.2	111.7
1965	44438	1663	363	1300	151	37.4	8.2	29.2	90.8
1966	44783	1509	352	1157	126	33.7	7.9	25.8	83.5
1967	45128	1417	360	1057	137	31.4	8.0	23.4	96.7
1968	45473	1465	380	1085	115	32.2	8.4	23.8	78.5
1969	45818	1591	336	1255	116	34.7	7.3	27.4	72.9
1970	46163	1448	325	1123	104	31.4	7.0	24.4	71.8
1971	46504	1452	280	1172	86	31.2	6.0	25.2	59.2
1972	46686	1445	323	1122	90	31.0	6.9	24.1	62.3
1973	46868	1386	340	1046	114	29.6	7.3	22.3	82.3
1974	47050	1403	304	1099	83	29.8	6.5	23.3	59.2
1975	47232	1410	297	1113	87	29.9	6.3	23.6	61.7
1976	47414	1409	337	1072	89	29.7	7.1	22.6	63.2
1977	47596	1326	253	1073	59	27.9	5.3	22.6	44.5
1978	47778	1283	246	1037	63	26.9	5.1	21.8	49.1
1979	47960	1125	223	902	65	23.5	4.6	18.9	57.8
1980	48142	1437	241	1196	46	29.8	5.0	24.8	32.0
1981	48320	1041	253	788	54	21.5	5.2	16.3	51.9
1982	48703	1301	313	988	65	26.7	6.4	20.3	50.0
1983	49086	1243	327	916	76	25.3	6.7	18.6	61.1
1984	49469	1328	316	1012	72	26.8	6.4	20.4	54.2
1985	49852	1216	421	795	57	24.4	8.4	16.0	46.9
1986	50235	1161	288	873	56	23.1	5.7	17.4	48.2
1987	50618	1256	257	999	43	24.8	5.1	19.7	34.2
1988	51001	1335	310	1025	62	26.2	6.1	20.1	46.4
1989	51384	1313	280	1033	54	25.6	5.4	20.2	41.1
1990	51767	1401	258	1143	42	27.1	5.0	22.1	30.0
1991	52500	1479	297	1182	39	28.2	5.7	22.5	26.4
1992	53600	1337	305	1032	40	24.9	5.7	19.2	29.9
1993	54200	1329	305	1024	58	24.5	5.6	18.9	43.6
1994	54900	1097	255	842	35	20.0	4.6	15.4	31.9
1995	55300	1216	287	929	20	22.0	5.2	16.8	16.4
1996	56300	1098	263	835	12	19.5	4.7	14.8	10.9
1997	57000	997	276	721	23	17.5	4.8	12.7	23.1

Source: Vital Statistics, SORS

Definitions

Population size

Number of population in the respective year. The data on the number of population in 1961, 1971, 1981 and 1991 are census data, while for the inter-census years the number of population was calculated as an average inter-census difference.

Livebirths

Absolute number of live births in the course of a year. Live born child means a child giving vital signs after birth (breathing, i.e. heartbeat), even for the shortest time, regardless the mother's pregnancy duration.

Deaths

Absolute number of deaths in the course of a year. Deceased is a person that whenever after having been born live, shows permanently stopped vital signs.

Natural increase

Natural population increase is the number of live births minus the number of deaths.

Infants deaths

Absolute number of infants deaths in the course of a year. Deceased infant is a child that after having been born live and before aged one year, shows permanently stopped vital signs.

Livebirths, per 1 000 population

Livebirths rate is the ratio of the number of live births and the population size in the respective year. The number of live births is divided by the population size and then multiplied by 1000.

Deaths, per 1 000 population

General mortality rate represents the ratio between the number of deaths and the population size in the respective year. The number of deaths is divided by population size and then multiplied by 1000.

Natural increase, per 1 000 population

Natural population increase rate is the difference between the number of live births and the number of deaths, in relation to the population size in the respective year.

Natural population increase rate = (number of live births - number of deaths) / population size * 1000

Infants deaths, per 1 000 livebirths

Infant mortality rate is the ratio of deceased children under 1 year of age and live births in the respective year. The mortality rate is expressed per 1000 live births.

Infant mortality rate = (number of deceased children under 1 year of age / number of live births) * 1000

Additional info:



Download all database data in Excel format:

[Data](#)



DevInfo profiles:

devinfo.stat.gov.rs/SerbiaProfileLauncher/?lang=en



DevInfo online database:

devinfo.stat.gov.rs/vitalna



For additional information or questions please contact:

devinfo@stat.gov.rs